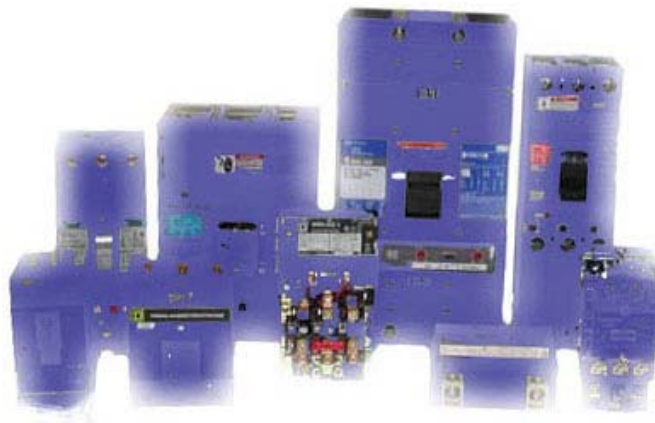




## HARDWARE PRODUCT INFORMATION GUIDE

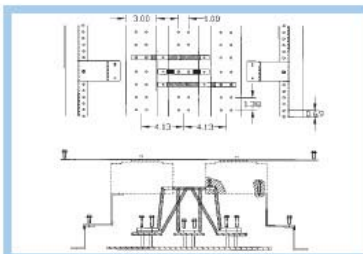


All hardware and components  
are proudly made in the U.S.A.

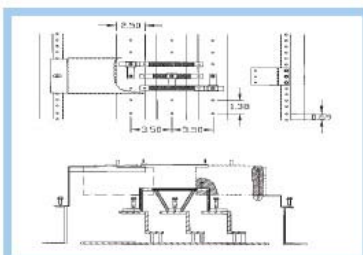
Any reference to original equipment manufacturer's names, frame designations, and panel numbers are for informational purposes only and does not represent an endorsement of this product by the manufacturer.

## Cutler Hammer / Westinghouse Hardware

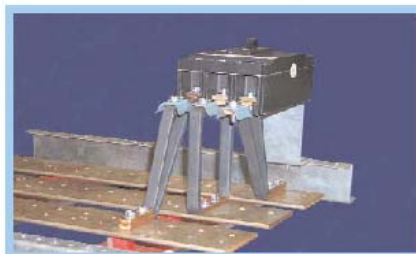
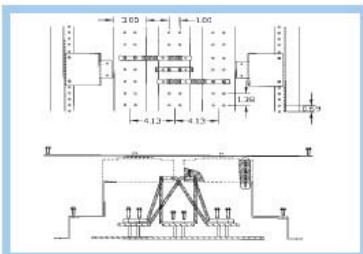
<b>Cat. No.</b>	<b>21-A131FD4-00</b>
<b>Amps</b>	150
<b>Frames</b>	EHD, FDB, FD, HFD
<b>Type</b>	PRL4
<b>Mounting</b>	Twin
<b>Material</b>	Copper
<b>List Price</b>	\$ 200.00



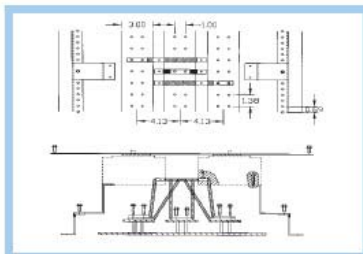
<b>Cat. No.</b>	<b>21-A132FB1-00</b>
<b>Amps</b>	150
<b>Frames</b>	EB, EHB, FB, HFB
<b>Type</b>	PRL4
<b>Mounting</b>	Twin
<b>Material</b>	Copper
<b>List Price</b>	\$ 200.00



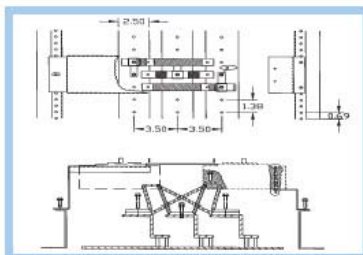
<b>Cat. No.</b>	<b>21-A141CA4-00</b>
<b>Amps</b>	225
<b>Frames</b>	CA, CAH, HCA
<b>Type</b>	PRL4
<b>Mounting</b>	Twin
<b>Material</b>	Copper
<b>List Price</b>	\$ 248.00



<b>Cat. No.</b>	<b>21-A141ED4-00</b>
<b>Amps</b>	225
<b>Frames</b>	ED, EDH, EDC
<b>Type</b>	PRL4
<b>Mounting</b>	Twin
<b>Material</b>	Copper
<b>List Price</b>	\$ 248.00



<b>Cat. No.</b>	<b>21-A142CA1-00</b>
<b>Amps</b>	225
<b>Frames</b>	CA, CAH, HCA
<b>Type</b>	CDP
<b>Mounting</b>	Twin
<b>Material</b>	Copper
<b>List Price</b>	\$ 248.00



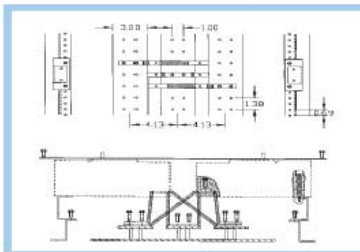
Contact us through our website ([www.oregonbreakers.com](http://www.oregonbreakers.com)), our toll free number (800-943 3323) or email us at [OregonBreakers@msn.com](mailto:OregonBreakers@msn.com)



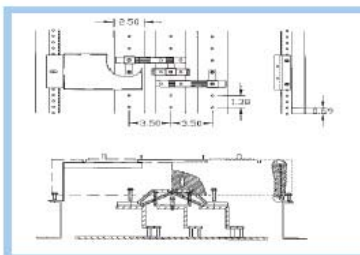
All hardware and components  
are proudly made in the U.S.A.

Any reference to original equipment manufacturer's names, frame designations, and panel numbers are for informational purposes only and does not represent an endorsement of this product by the manufacturer.

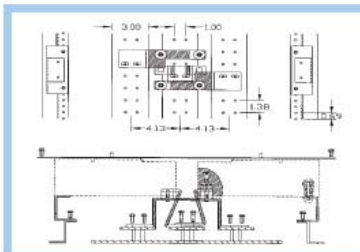
### Cutler-Hammer / Westinghouse Hardware (cont.)



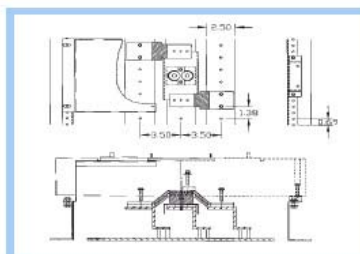
<b>Cat. No.</b>	<b>21-A151JD4-00</b>
<b>Amps</b>	250
<b>Frames</b>	JD, HJD, JDC
<b>Type</b>	PRL4
<b>Mounting</b>	Twin
<b>Material</b>	Copper
<b>List Price</b>	\$ 280.00



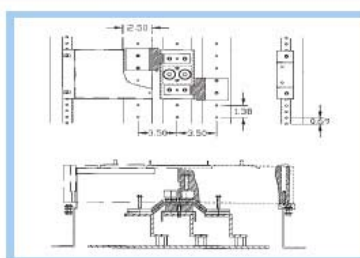
<b>Cat. No.</b>	<b>21-A152KB1-00</b>
<b>Amps</b>	250
<b>Frames</b>	KB, HKB
<b>Type</b>	CDP
<b>Mounting</b>	Twin
<b>Material</b>	Copper
<b>List Price</b>	\$ 280.00



<b>Cat. No.</b>	<b>21-A161KD4-00</b>
<b>Amps</b>	400
<b>Frames</b>	DK, KD, HKD, KDC
<b>Type</b>	PRL4
<b>Mounting</b>	Twin
<b>Material</b>	Copper
<b>List Price</b>	\$ 472.00



<b>Cat. No.</b>	<b>21-A162LA4-00</b>
<b>Amps</b>	400
<b>Frames</b>	LA, HLA, LC, HLC
<b>Type</b>	CDP
<b>Mounting</b>	Twin
<b>Material</b>	Copper
<b>List Price</b>	\$ 472.00



<b>Cat. No.</b>	<b>21-A162LB1-00</b>
<b>Amps</b>	400
<b>Frames</b>	LB, HLB
<b>Type</b>	CDP
<b>Mounting</b>	Twin
<b>Material</b>	Copper
<b>List Price</b>	\$ 632.00

Contact us through our website ([www.oregonbreakers.com](http://www.oregonbreakers.com)), our toll free number (800-943 3323) or email us at [OregonBreakers@msn.com](mailto:OregonBreakers@msn.com)



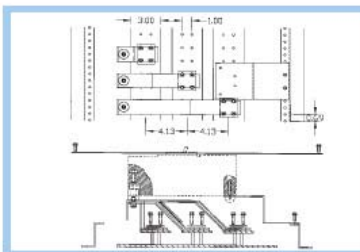
All hardware and components  
are proudly made in the U.S.A.

Any reference to original equipment manufacturer's names, frame designations, and panel numbers are for informational purposes only and does not represent an endorsement of this product by the manufacturer.

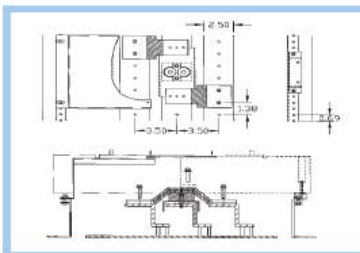


### Cutler Hammer / Westinghouse Hardware (cont.)

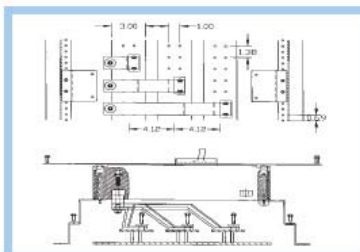
<b>Cat. No.</b>	<b>21-A171LD4-00</b>
<b>Amps</b>	600
<b>Frames</b>	LD, HLD, LDC
<b>Type</b>	PRL4
<b>Mounting</b>	Single
<b>Material</b>	Copper
<b>List Price</b>	\$ 632.00



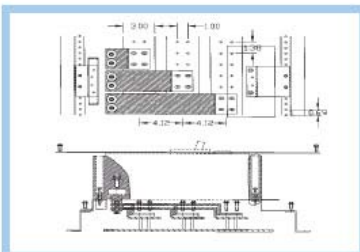
<b>Cat. No.</b>	<b>21-A172LA6-00</b>
<b>Amps</b>	600
<b>Frames</b>	LA, HLA, LC, HLC
<b>Type</b>	CDP
<b>Mounting</b>	Twin
<b>Material</b>	Copper
<b>List Price</b>	\$ 425.00



<b>Cat. No.</b>	<b>21-A181MD4-00</b>
<b>Amps</b>	800
<b>Frames</b>	MD, MDL, MC
<b>Type</b>	PRL4
<b>Mounting</b>	Single
<b>Material</b>	Copper
<b>List Price</b>	\$ 1,390.00



<b>Cat. No.</b>	<b>21-A191ND4-00</b>
<b>Amps</b>	1200
<b>Frames</b>	NC, HNC, ND
<b>Type</b>	PRL4
<b>Mounting</b>	Single
<b>Material</b>	Copper
<b>List Price</b>	\$ 1,410.00



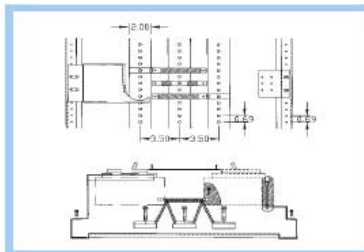
Contact us through our website ([www.oregonbreakers.com](http://www.oregonbreakers.com)), our toll free number (800-943 3323) or email us at [OregonBreakers@msn.com](mailto:OregonBreakers@msn.com)



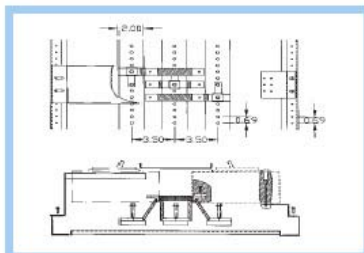
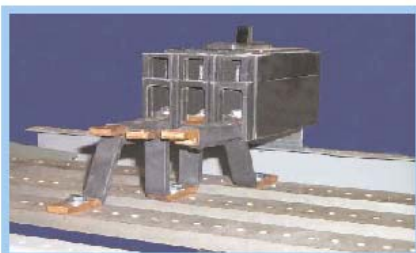
All hardware and components  
are proudly made in the U.S.A.

Any reference to original equipment manufacturer's names, frame designations, and panel numbers are for informational purposes only and does not represent an endorsement of this product by the manufacturer.

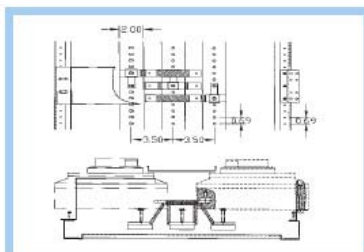
## Federal Pacific Hardware



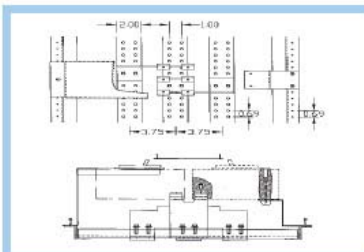
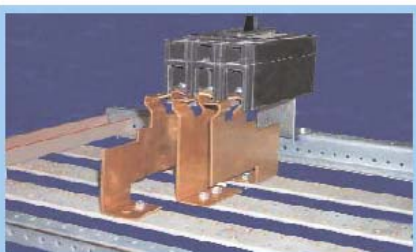
<b>Cat. No.</b>	<b>21-C112NEF-00</b>
<b>Amps</b>	100
<b>Frames</b>	NE, NEF, HEG
<b>Type</b>	CDP
<b>Mounting</b>	Twin
<b>Material</b>	Copper
<b>List Price</b>	\$ 240.00



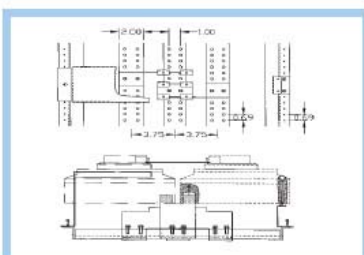
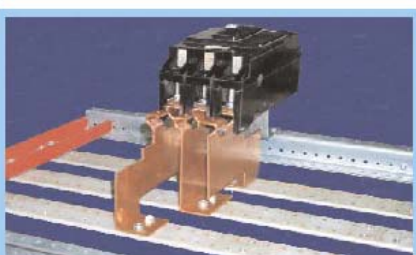
<b>Cat. No.</b>	<b>21-C142NEJ-00</b>
<b>Amps</b>	225
<b>Frames</b>	NEJ, NEJH, HEJ
<b>Type</b>	CDP
<b>Mounting</b>	Twin
<b>Material</b>	Copper
<b>List Price</b>	\$ 320.00



<b>Cat. No.</b>	<b>21-C142NFJ-00</b>
<b>Amps</b>	225
<b>Frames</b>	NFJ, HFJ
<b>Type</b>	CDP
<b>Mounting</b>	Twin
<b>Material</b>	Copper
<b>List Price</b>	\$ 320.00



<b>Cat. No.</b>	<b>21-C145NEJ-00</b>
<b>Amps</b>	225
<b>Frames</b>	NEJ, NEJH, HEJ
<b>Type</b>	BDP
<b>Mounting</b>	Twin
<b>Material</b>	Copper
<b>List Price</b>	\$ 320.00



<b>Cat. No.</b>	<b>21-C145NFJ-00</b>
<b>Amps</b>	225
<b>Frames</b>	NFJ, HFJ
<b>Type</b>	BDP
<b>Mounting</b>	Twin
<b>Material</b>	Copper
<b>List Price</b>	\$ 320.00

Contact us through our website ([www.oregonbreakers.com](http://www.oregonbreakers.com)), our toll free number (800-943 3323), or email us at [OregonBreakers@msn.com](mailto:OregonBreakers@msn.com)

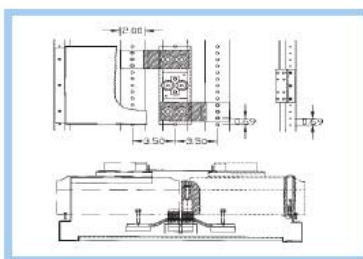


All hardware and components  
are proudly made in the U.S.A.

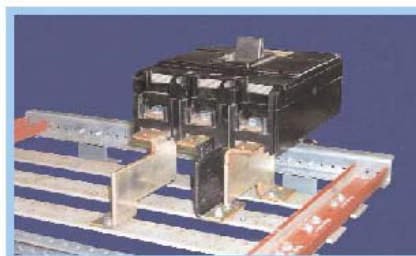
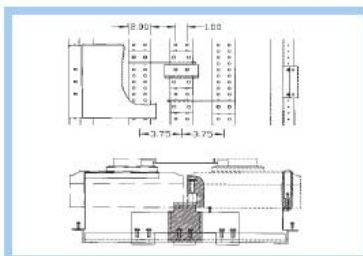
Any reference to original equipment manufacturer's names, frame designations, and panel numbers are for informational purposes only and does not represent an endorsement of this product by the manufacturer.



<b>Cat. No.</b>	<b>21-C162NJJL-00</b>
<b>Amps</b>	400
<b>Frames</b>	NJJ, NJL, HJL
<b>Type</b>	CDP
<b>Mounting</b>	Twin
<b>Material</b>	Copper
<b>List Price</b>	\$ 560.00

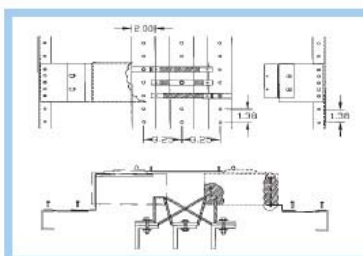


<b>Cat. No.</b>	<b>21-C165NJJL-00</b>
<b>Amps</b>	400
<b>Frames</b>	NJJ, NJL, HJL
<b>Type</b>	BDP
<b>Mounting</b>	Twin
<b>Material</b>	Copper
<b>List Price</b>	\$ 560.00

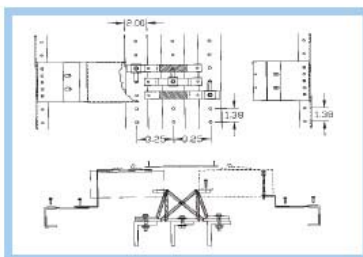


### General Electric Hardware

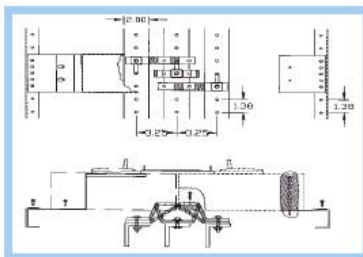
<b>Cat. No.</b>	<b>21-D136TED-00</b>
<b>Amps</b>	150
<b>Frames</b>	TEB, TED, THED
<b>Type</b>	AV1
<b>Mounting</b>	Twin
<b>Material</b>	Copper
<b>List Price</b>	\$ 200.00



<b>Cat. No.</b>	<b>21-D146TQD-00</b>
<b>Amps</b>	225
<b>Frames</b>	TQD, THQD
<b>Type</b>	AV1
<b>Mounting</b>	Twin
<b>Material</b>	Copper
<b>List Price</b>	\$ 248.00



<b>Cat. No.</b>	<b>21-D156TFK-00</b>
<b>Amps</b>	250
<b>Frames</b>	TFJ, TFK, THFK
<b>Type</b>	AV1
<b>Mounting</b>	Twin
<b>Material</b>	Copper
<b>List Price</b>	\$ 280.00



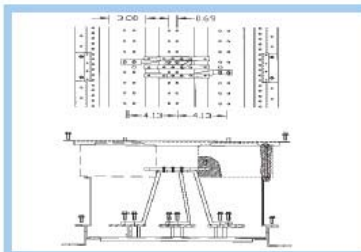
Contact us through our website ([www.oregonbreakers.com](http://www.oregonbreakers.com)), our toll free number (800-943 3323), or email us at [OregonBreakers@msn.com](mailto:OregonBreakers@msn.com)



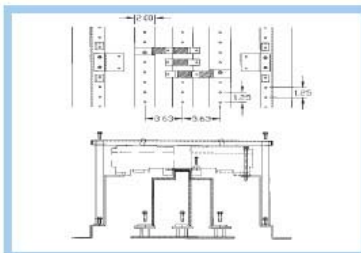
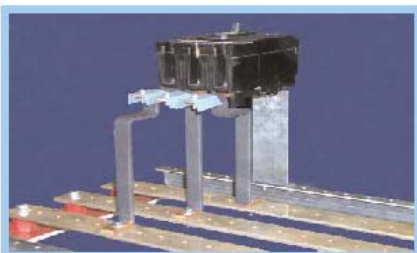
All hardware and components  
are proudly made in the U.S.A.

Any reference to original equipment manufacturer's names, frame designations, and panel numbers are for informational purposes only and does not represent an endorsement of this product by the manufacturer.

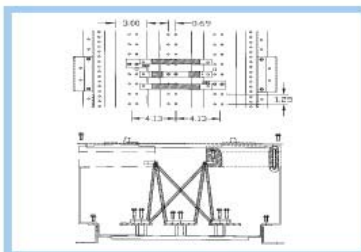
## Siemens / I.T.E. Hardware



<b>Cat. No.</b>	<b>21-B123ED6-00</b>
<b>Amps</b>	125
<b>Frames</b>	ED4, ED6, HED, HHED
<b>Type</b>	FC1
<b>Mounting</b>	Twin
<b>Material</b>	Copper
<b>List Price</b>	\$ 240.00



<b>Cat. No.</b>	<b>21-B134EH3-00</b>
<b>Amps</b>	150
<b>Frames</b>	EE, EH, EF, HE
<b>Type</b>	VB
<b>Mounting</b>	Twin
<b>Material</b>	Copper
<b>List Price</b>	\$ 240.00



<b>Cat. No.</b>	<b>21-B143QJ6-00</b>
<b>Amps</b>	225
<b>Frames</b>	QJ22, QJ23, QJH
<b>Type</b>	FC1
<b>Mounting</b>	Twin
<b>Material</b>	Copper
<b>List Price</b>	\$ 320.00

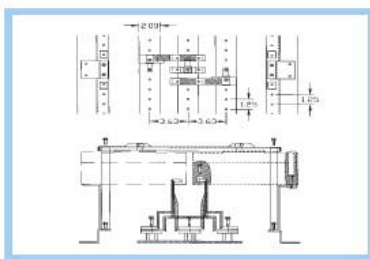
Contact us through our website ([www.oregonbreakers.com](http://www.oregonbreakers.com)), our toll free number (800-943 3323), or email us at [OregonBreakers@msn.com](mailto:OregonBreakers@msn.com)



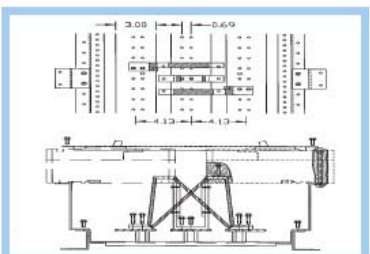
All hardware and components  
are proudly made in the U.S.A.

Any reference to original equipment manufacturer's names, frame designations, and panel numbers are for informational purposes only and does not represent an endorsement of this product by the manufacturer.

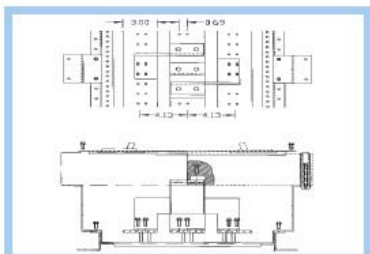
<b>Cat. No.</b>	<b>21-B144FJ3-00</b>
<b>Amps</b>	225
<b>Frames</b>	FJ3
<b>Type</b>	VB
<b>Mounting</b>	Twin
<b>Material</b>	Copper
<b>List Price</b>	\$ 320.00



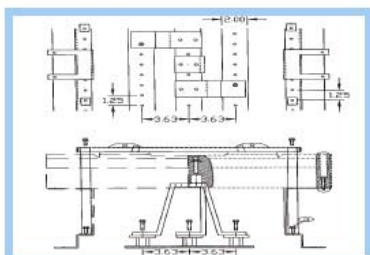
<b>Cat. No.</b>	<b>21-B153FD6-00</b>
<b>Amps</b>	250
<b>Frames</b>	FD62, FD63, HFD
<b>Type</b>	FC1
<b>Mounting</b>	Twin
<b>Material</b>	Copper
<b>List Price</b>	\$ 320.00



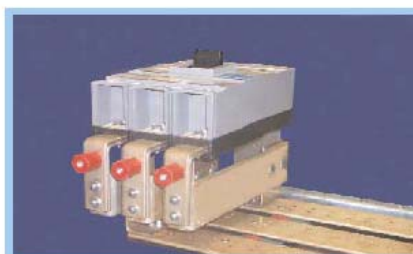
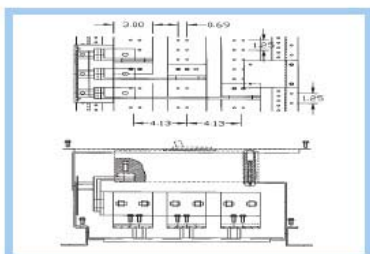
<b>Cat. No.</b>	<b>21-B163JD6-00</b>
<b>Amps</b>	400
<b>Frames</b>	JD62, JD63, HJD
<b>Type</b>	FC1
<b>Mounting</b>	Twin
<b>Material</b>	Copper
<b>List Price</b>	\$ 560.00



<b>Cat. No.</b>	<b>21-B164JJ3-00</b>
<b>Amps</b>	400
<b>Frames</b>	JD3, JJ3, JL3, HJ3
<b>Type</b>	VB
<b>Mounting</b>	Twin
<b>Material</b>	Copper
<b>List Price</b>	\$ 560.00



<b>Cat. No.</b>	<b>21-B173LD6-00</b>
<b>Amps</b>	600
<b>Frames</b>	LXD, FDB, LD, HLD, HHLD
<b>Type</b>	CDP
<b>Mounting</b>	Single
<b>Material</b>	Copper
<b>List Price</b>	\$ 632.00



Contact us through our website ([www.oregonbreakers.com](http://www.oregonbreakers.com)), our toll free number (800-943 3323), or email us at [OregonBreakers@msn.com](mailto:OregonBreakers@msn.com)



All hardware and components  
are proudly made in the U.S.A.

Any reference to original equipment manufacturer's names, frame designations, and panel numbers are for informational purposes only and does not represent an endorsement of this product by the manufacturer.



### Hardware Currently in Design Phase

Kit No.	Mfg.	Material	Amps	Type	Mounting	Reference
21-A182MD4-00	C-H/W	CU	800	CDP	Single	MD4
21-C172NM1-00	F.P.E.	CU	600	CDP	Twin	NM1
21-C185NM3-00	F.P.E.	CU	800	BDP	Single	NM3
21-C175NM3-00	F.P.E.	CU	600	BDP	Twin	NM3
21-C182NM1-00	F.P.E.	CU	800	CDP	Twin	NM1
21-C192NM1-00	F.P.E.	CU	1200	CDP	Single	NM1
21-C195NM3-00	F.P.E.	CU	1200	BDP	Single	NM3
21-D186TKM-00	G.E.	CU	800	AV1	Single	TKM
21-D196TKM-00	G.E.	CU	1200	AV1	Single	TKM
21-G138SEH-00	Sylvania	CU	150	BH		BH03
21-G148QFB-00	Sylvania	CU	225	BH		BH09
21-G158	Sylvania	CU	250	BH		BH15
21-G168	Sylvania	CU	400	BH		BH11
21-G188	Sylvania	CU	800	BH		BH17
21-F137SEH-00	Zinsco	CU	150	CBC		CBCNHC72
21-F147QFB-00	Zinsco	CU	225	CBC		CBCMHC10
21-F157	Zinsco	CU	250	CBC		CBCMHC74
21-F167	Zinsco	CU	400	CBC		CBCMHC61
21-F197	Zinsco	CU	800	CBC		CBCMHC39

**Contact us through our website  
([www.oregonbreakers.com](http://www.oregonbreakers.com)),  
our toll free number (800-943-3323),  
or email us at  
[OregonBreakers@msn.com](mailto:OregonBreakers@msn.com)**



**All hardware and components  
are proudly made in the U.S.A.**

Any reference to original equipment manufacturer's names, frame designations, and panel numbers are for informational purposes only and does not represent an endorsement of this product by the manufacturer.